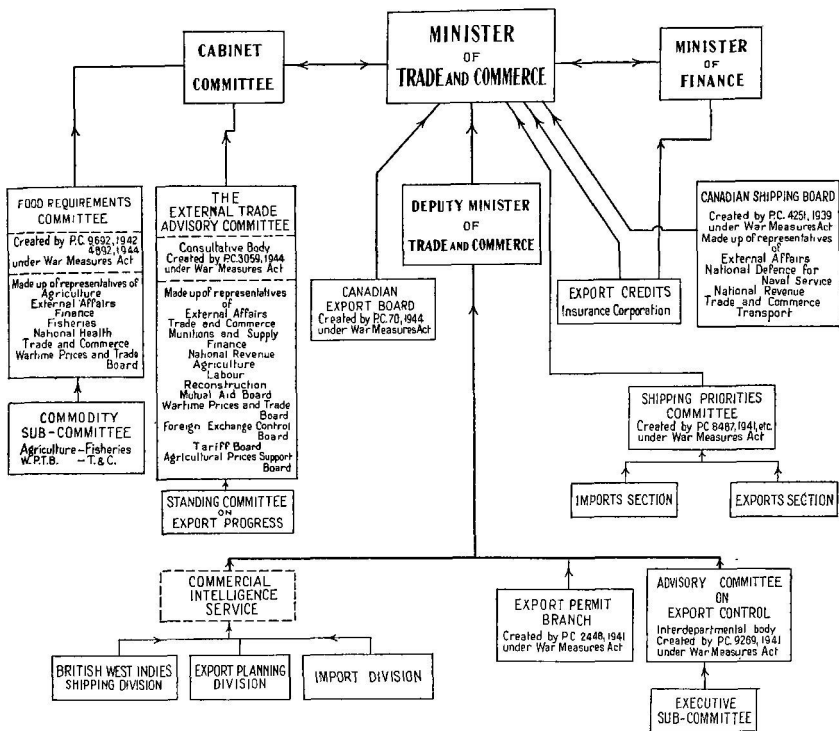


## GOVERNMENTAL MACHINERY FOR THE CONTROL OF EXTERNAL TRADE IN WARTIME AND ITS POST-WAR REHABILITATION



Departments or agencies responsible for supply. As the War has progressed, shortages, loss of established foreign sources of supply, shipping difficulties and other abnormal conditions of widely varied nature have made necessary the control of an ever-widening range of exports until at present all commodities are under some degree of export control. However, during the past year the question of relaxing export control wherever possible has received the close attention of the different agencies and Departments of Government concerned. As a result it was found possible, because of an improved supply situation, to remove a large number of items from export control when consigned to British Empire and United States destinations.

A detailed account of the activities of the Export Permit Branch during the war years is given at pp. 442-444 of the 1943-44 Year Book.

**Shipping Priorities.**—The Shipping Priorities Committee was set up under the Minister of Trade and Commerce on Oct. 31, 1944, on the recommendation of the Joint Economic Committees of the United States and Canada. The two